

Type DVC1380

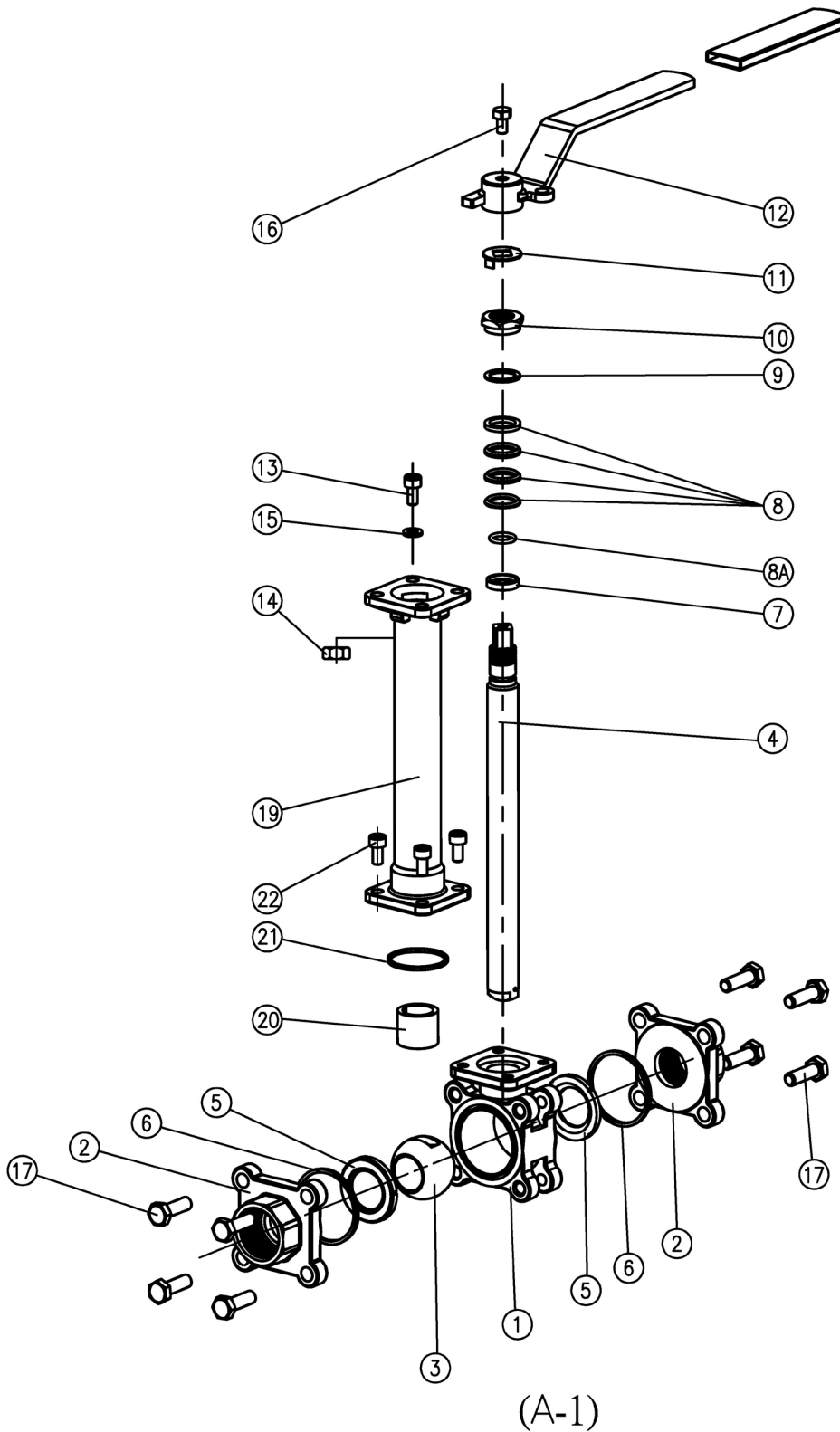
3-PCS Cryogenic Ball Valve

Installation, Operation & Maintenance



armatec

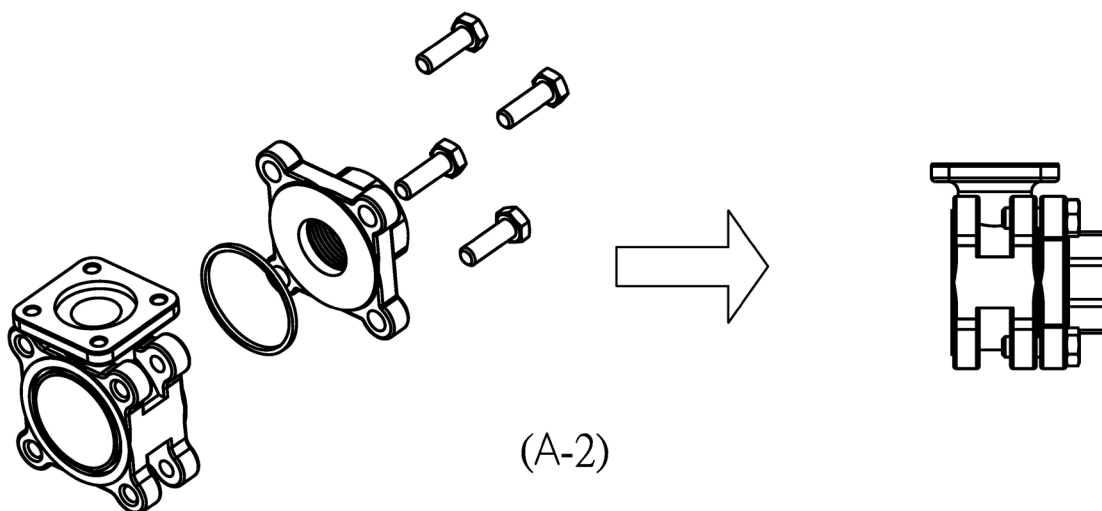
1. STEPS OF INSTALLATION



STEP 1:

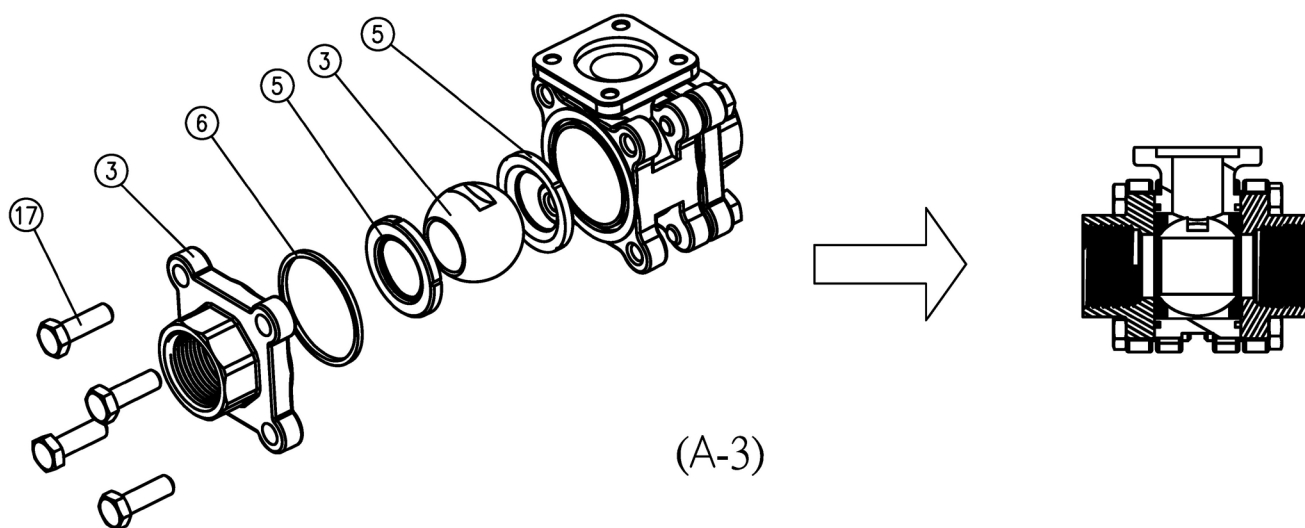
A-1): Complete explode view drawing.

STEPS OF INSTALLATION



STEP 2:

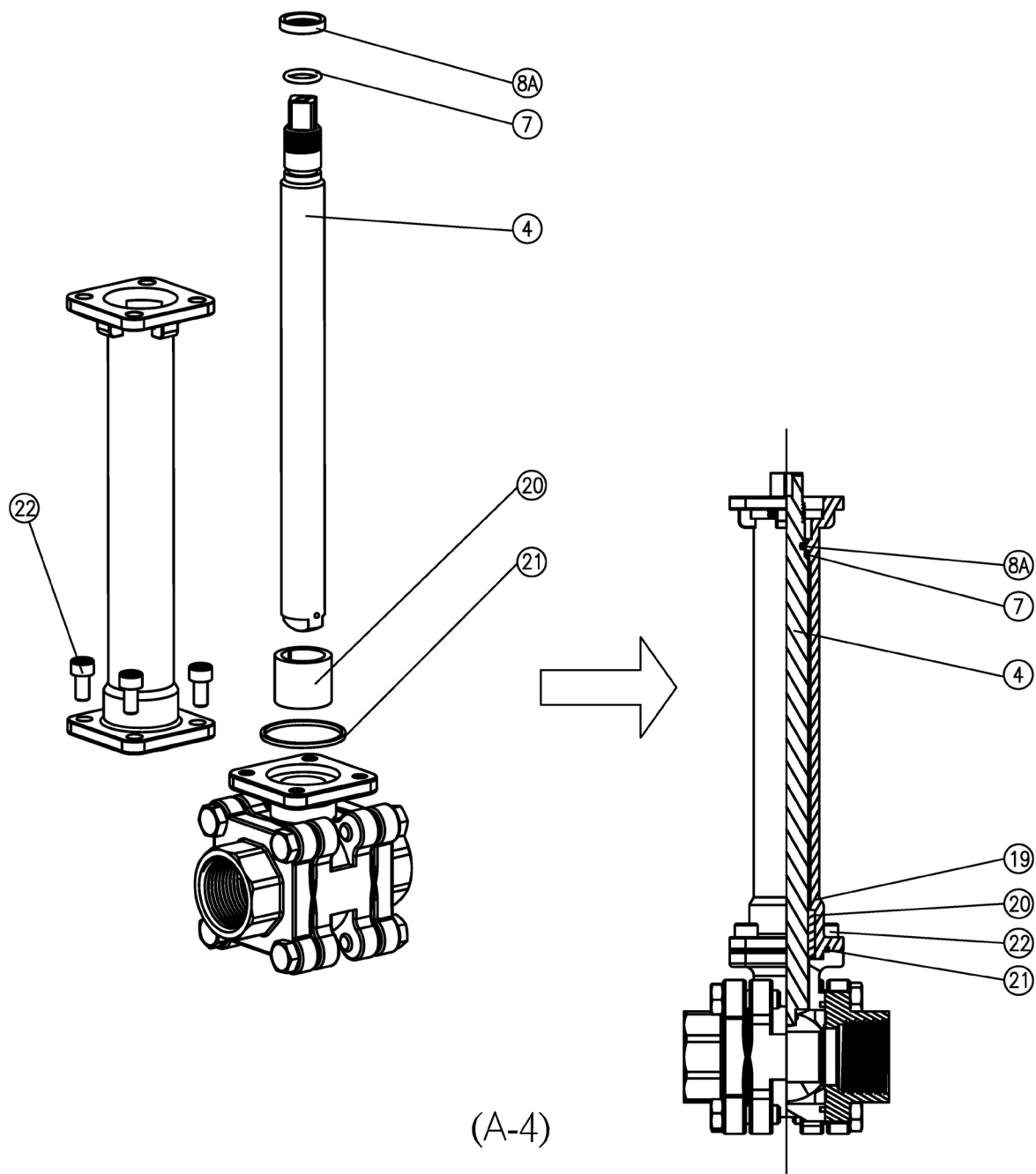
A-2):Showing single side assembly drawing. .
Put part (6),(2) on the valve body (1) in order,
Tighten the bolts (17) properly and evenly.



STEP 3:

A-3):Put the seat (5) & ball (3) align into the valve body (1),
Put parts, seat(5), seal(6), cap(2), body bolt(17) on the other side,
following step 2 to complete assembly.

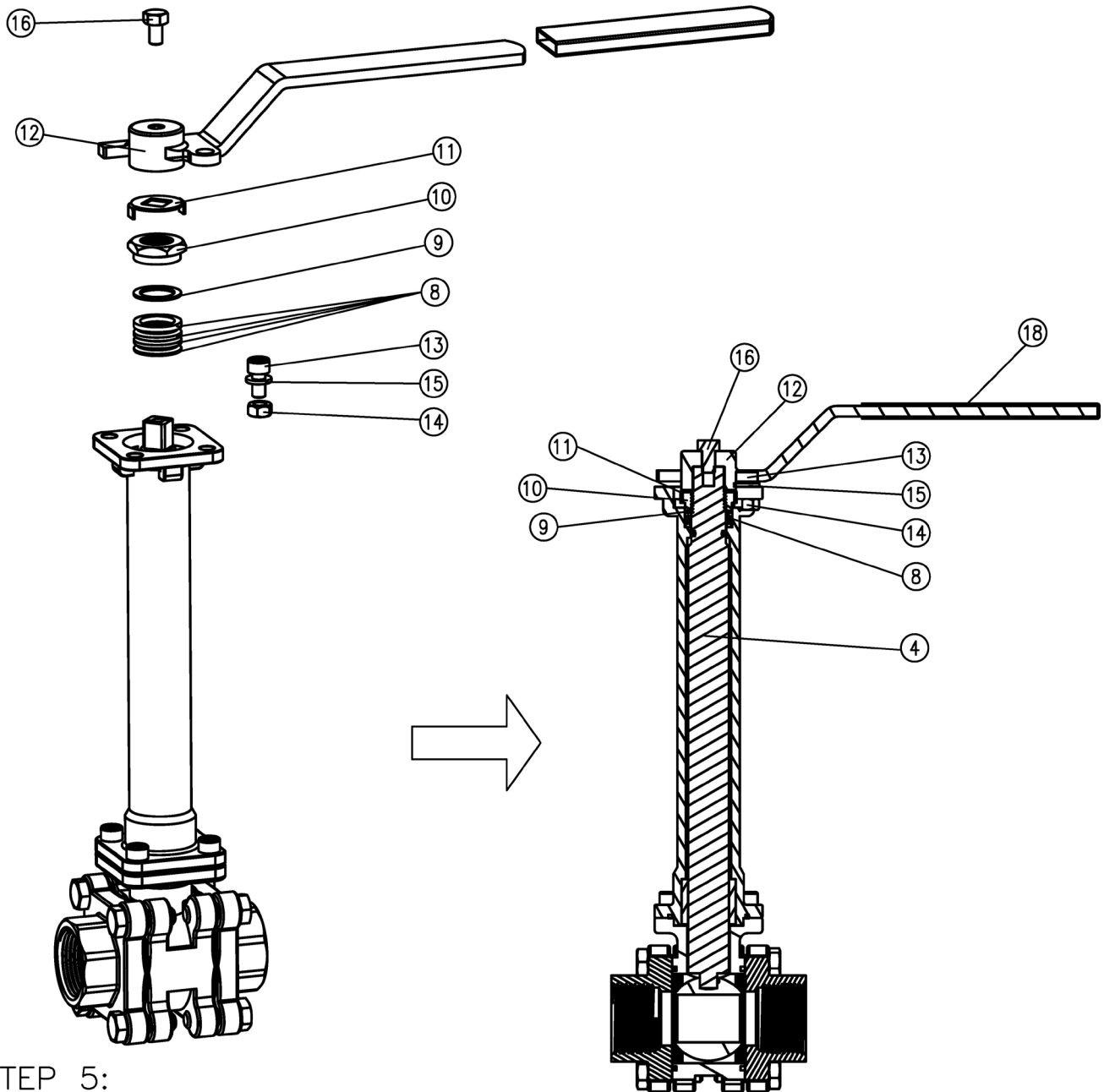
STEPS OF INSTALLATION



STEP 4:

A-4) Put the parts (7),(8) in order to the stem (4) and assemble to the inside of the extension (19), position thrust bearing (20) & extension gasket(21) at right place, tighten the extension bolts (22) properly and evenly.

STEPS OF INSTALLATION



STEP 5:

A-4): Put stem packing (8) & thrust washer (9) into the stem (4) tighten the stem nut (10) properly and evenly.

(11) lock saddle must be positioned right to the hexagon sides to prevent it from loosening.

Assemble the parts (12)(16)(18)(15)(13)(14) in order, check the port if it is at right direction during open/close operator If not, it takes the opposite procedures to dismantle the parts.

STEPS OF INSTALLATION



Size	Torque (N.M) (under normal atmospheric temperature)	Torque (N.M) (under - 196°C)	Stem Nut Tightening Torque (N.M)	Body Bolt Tightening Torque (N.M)	Extension Bonnet Tightening Torque (N.M)	KV
1/2"	12	26	9.04~10.17	17.52	6.78	16.34
3/4"	16	38	9.04~10.17	17.52	6.78	30.10
1"	21	47	12.43~14.69	17.52	9.04	43.00
1 1/4"	29	68	12.43~14.69	33.90	9.04	94.60
1 1/2"	37	85	15.82~18.08	33.90	17.52	172.00
2"	59	160	15.82~18.08	58.76	33.90	301.00

*Torque figures include 30% safety factors.

2. CERTIFIKATER, TESTS

CRYOGENIC TEST CERTIFICATE BS6364:1984 with 1998 amendment

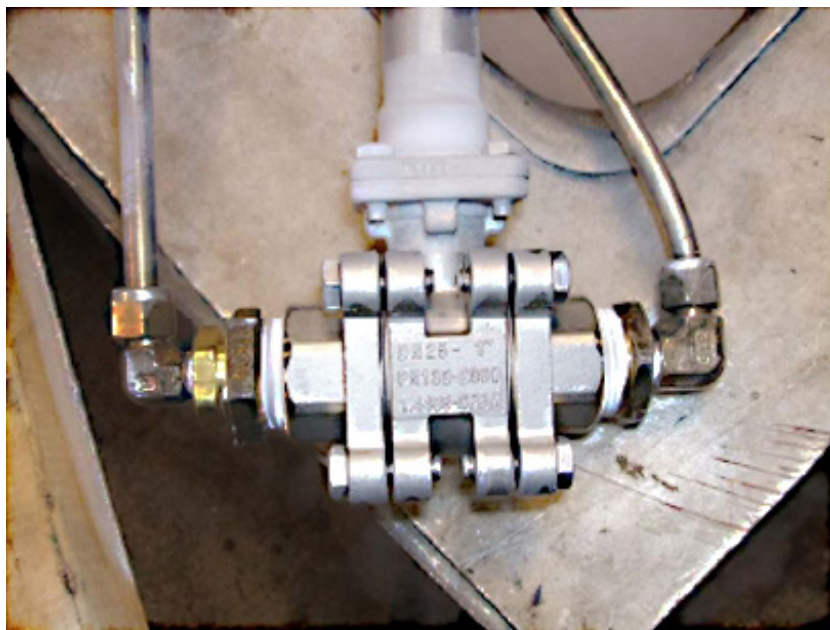
Name of Manufacturer: Anson Flow Corp	Test Date: December 3, 2007
Designation of Valve: AF-36C	Report/Certificate Number: 207110-1
Size: 1 inch	Pressure Rating: 2000 psig
Body Material: Stainless Steel – CF8M	Seat Material: PCTFE
Trim Material: SS316	Stem Seal / Body Seal: PCTFE / Graphite

The above valve was tested in accordance with the above cryogenic test procedure. All of the applicable test parameters were met and external and through leakage measurements were below the allowable limits.

This certificate refers to the above mentioned product. This is to certify that the test specimen provided is in conformity with the standard mentioned above. This certificate does not imply assessment of the production of the product.

Laboratory Information

Name:	Yarmouth Research and Technology
Address:	434 Walnut Hill Road North Yarmouth, ME 04097 USA
Tester:	Matthew Wasielewski, PE yrtlab@maine.rr.com www.cryogenictesting.com (207) 829-5359



The Expert Leader
Concepts for flow technology

Armatec A/S

Øst:

Mjølnersvej 4-8
DK-2600 Glostrup
Tlf: +45 46 96 00 00
Mail: armatec@armatec.dk

Vest:

Ferrarivej 14
DK-7100 Vejle
Tlf: +45 75 72 33 00
Mail: mail@armatec.dk

